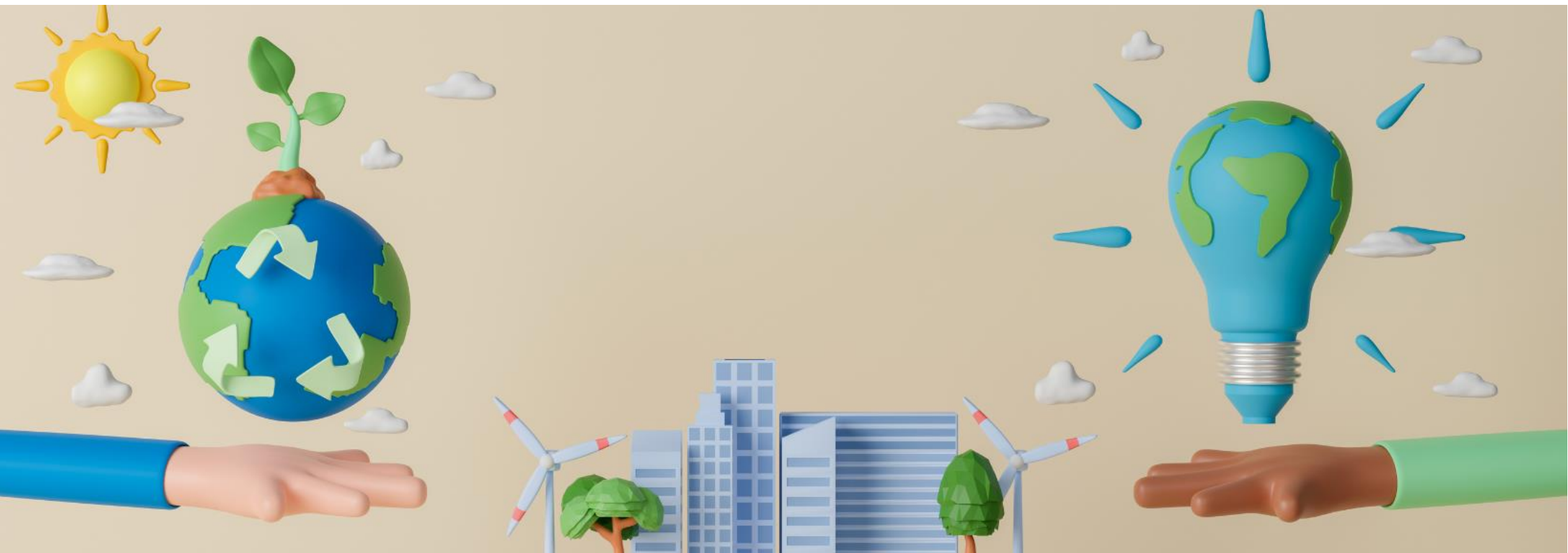
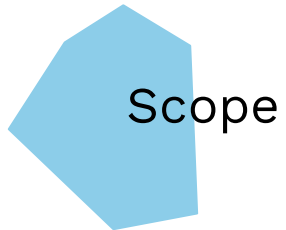




ESG Governance Policy





OneMedical Group is an ethical, responsible, and environmentally-conscious employer, working with and supporting likeminded stakeholders. We are committed to measuring, managing, and reporting on our impacts, both positive and negative.

The Board of Directors is committed to complying and keeping up to date with all legal requirements applicable to our industry, our people, and our environmental footprint.

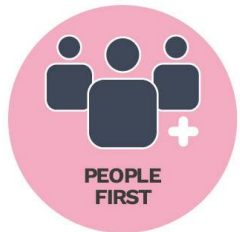
The OneMedical Group ESG Governance Policy covers all activities undertaken by OneMedicare and OneMedical Property.



Rachel Beverley-
Stevenson
Chief Executive Officer
May 2024



Our commitments



Becoming an inclusive employer of choice by ensuring we are recruiting in the right way and then enabling our employees to bring their authentic selves to work by understanding and supporting things that are important to them.



Working in line with best practice under internationally recognised standards such as ISO 14001 (Environmental Management Systems) including supply chain audits, and internally and externally reporting on our impacts.



Understanding, measuring and monitoring, our carbon footprint, what elements we can control and what we can influence, and in so doing, being a more responsible user of carbon-emitting products, services, and ways of working.

Engaging and educating our employees and stakeholders so that we all aware of the day-to-day factors which contribute to our carbon footprint and that negatively and positively affect the environment.

 Reporting

We will review our progress annually with the Board of Directors and aim to publish a report on our company website.

Our Environmental and Social Action Plans provide more details on what we measure, monitor, and report on.



Get in touch

E: communications@onemedicalgroup.co.uk
W: www.onemedicalgroup.co.uk

V.3 May 2024

